

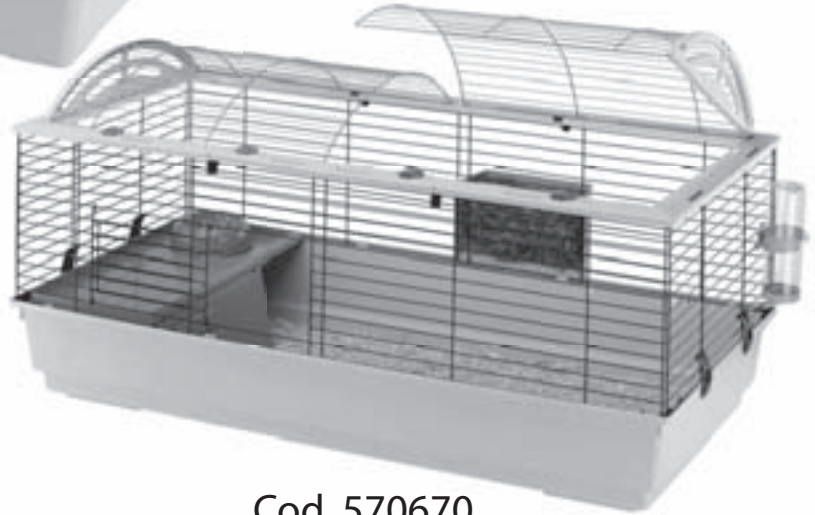
Cod. 570660

960 x 570 x 560 mm



Cod. 570650

780 x 480 x 500 mm

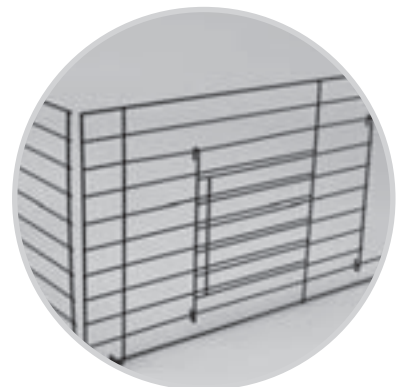
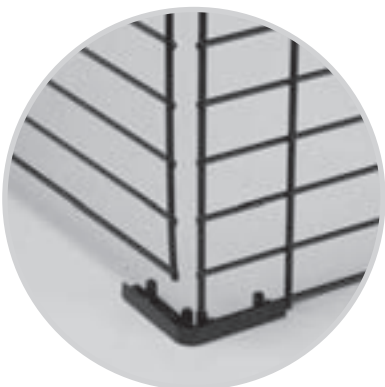
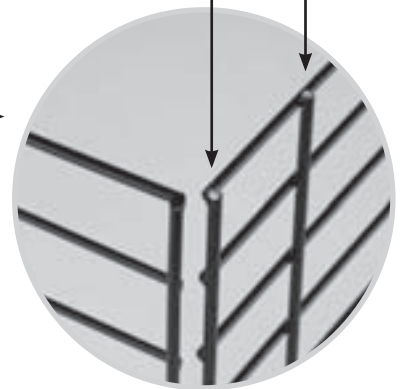
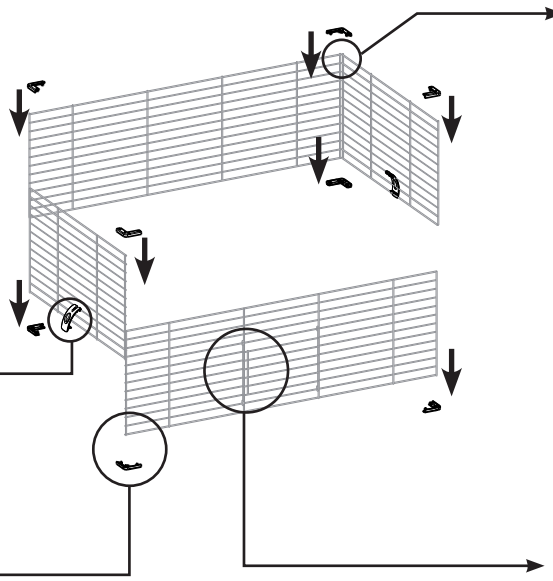
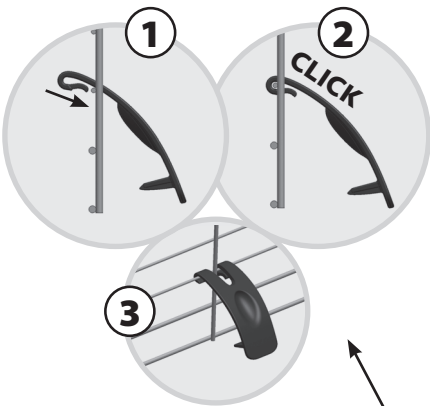


Cod. 570670

1190 x 580 x 610 mm



- Posizionare la rete in modo tale che le barre verticali siano sul lato esterno della gabbia.
- Place the net so that the vertical bars are in the outer side of the cage.
- Positionner la grille afin que les barres verticales soient sur le côté extérieur de la cage.
- Bringen Sie das Netz so an, dass sich die vertikalen Stäbe auf der äußeren Seite des Käfigs befinden.
- Plaats het gaas op zo'n manier dat de verticale spijlen aan de buitenkant van de kooi zitten.
- Posicionar la red de modo que las barras verticales estén en el lado externo de la jaula.

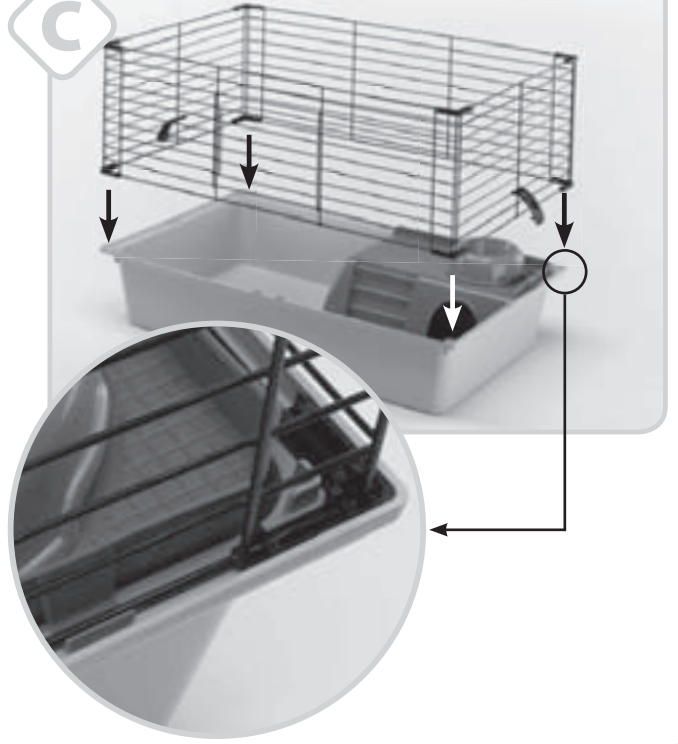


# casita 80

**B**

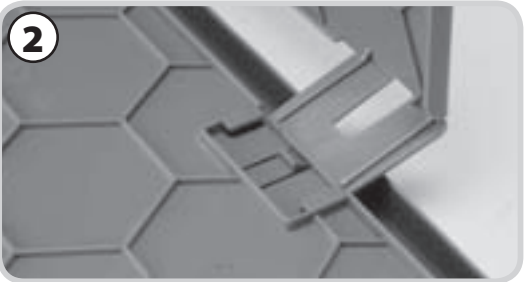


**C**

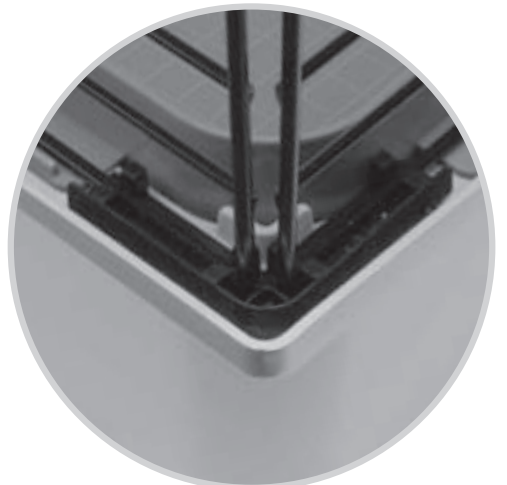
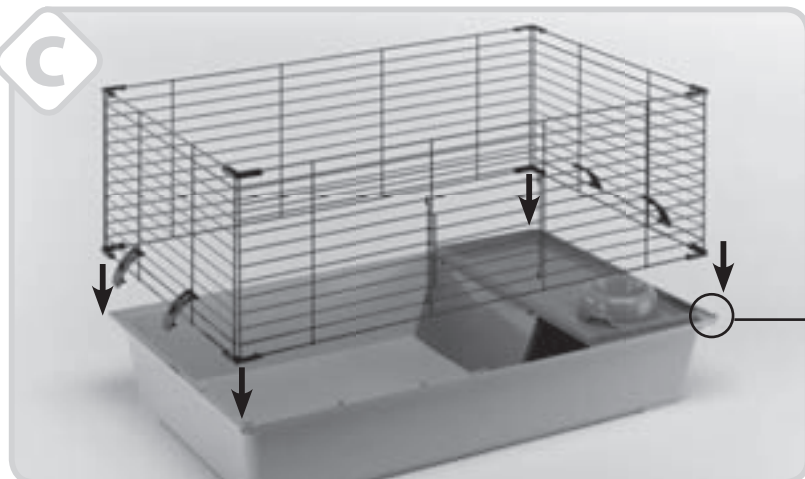


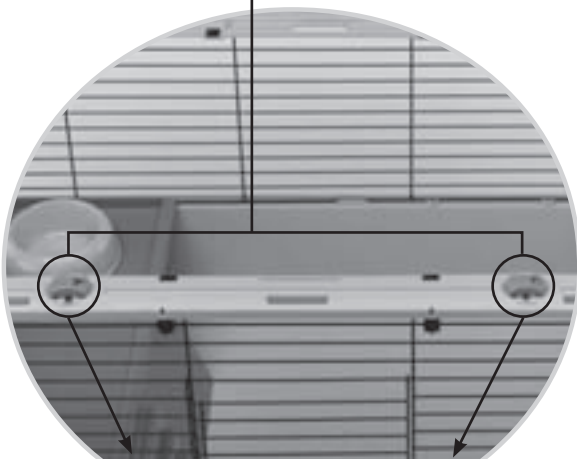
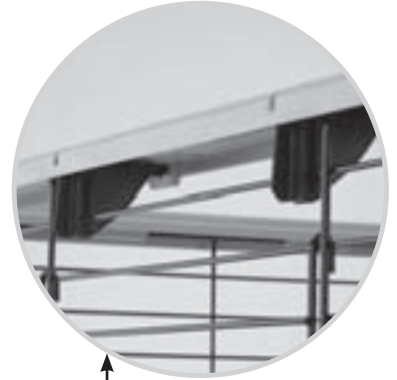
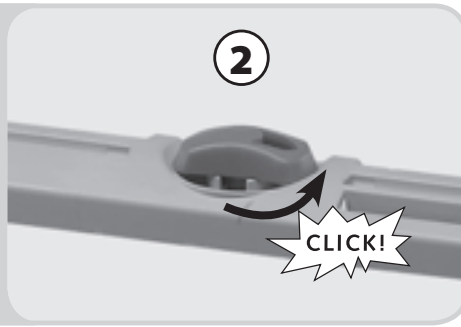
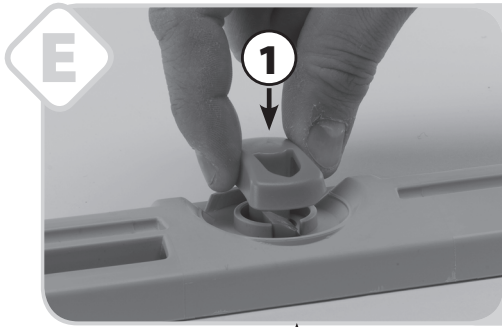
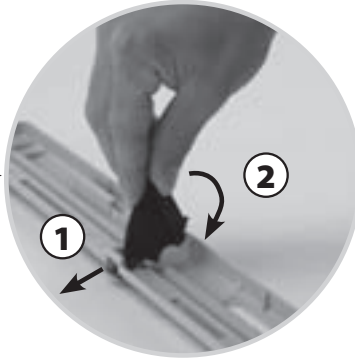
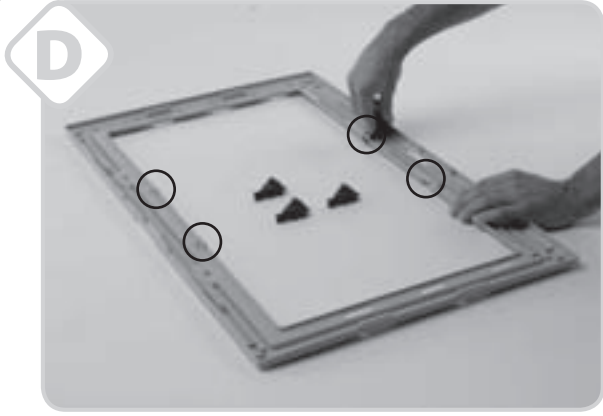
# casita 100-120

**B**

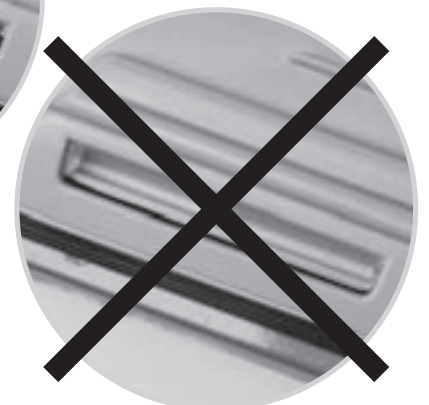
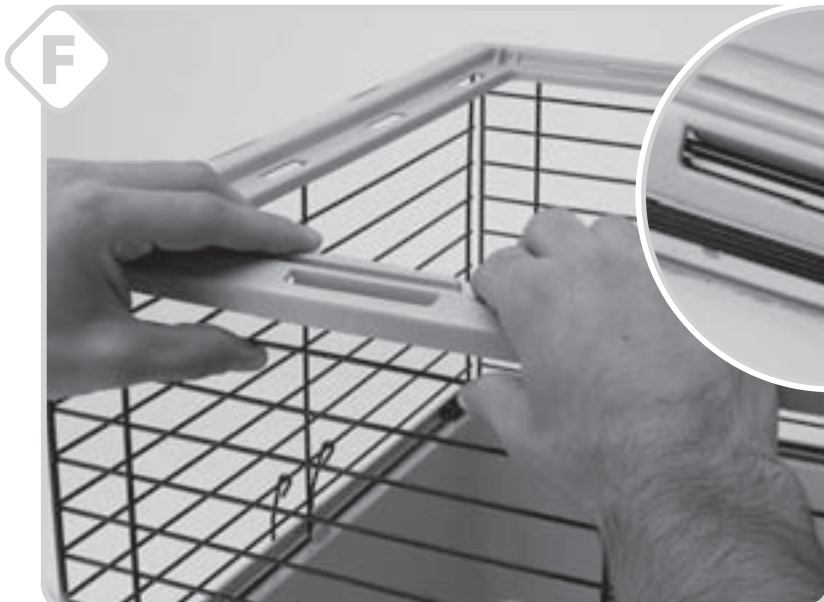
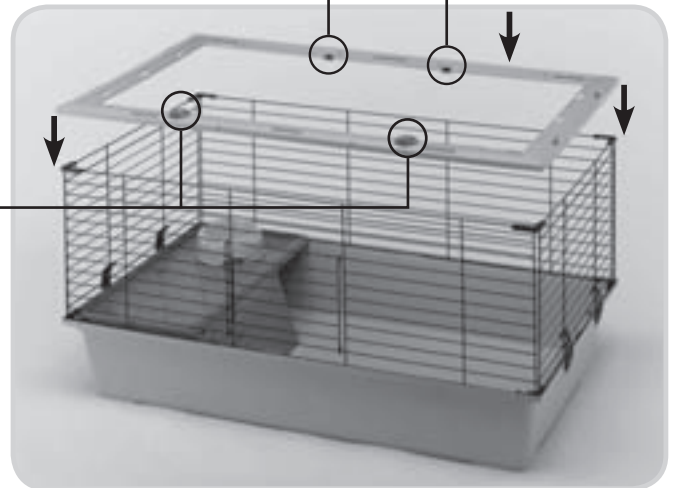


**C**





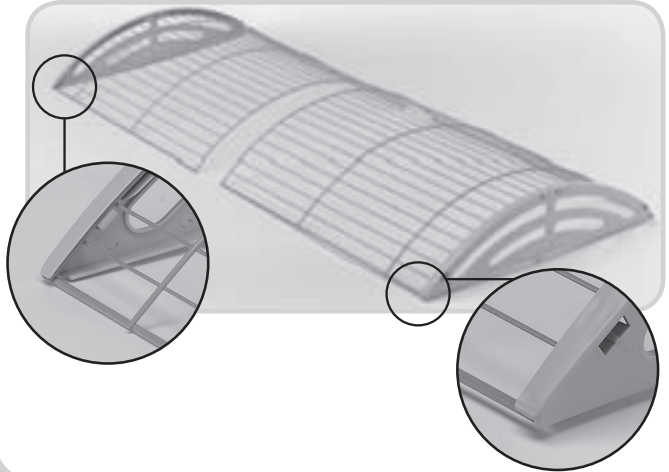
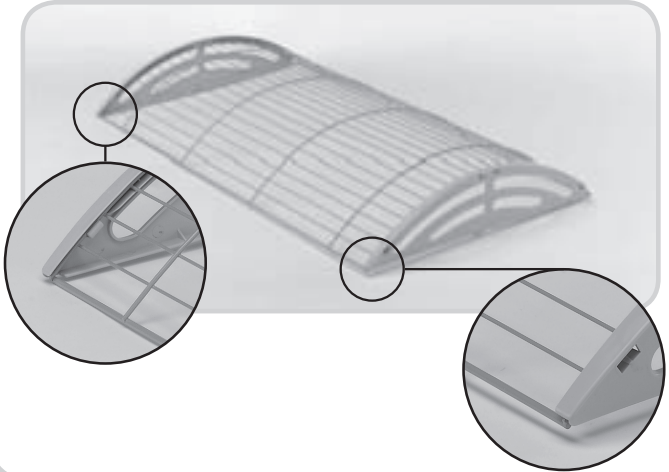
Lato porta - Door side - Côté porte  
Türseite - Lado de la puerta





# casita 80-100

# casita 120



**G**

**1L**

**LEFT**  
Sinistra  
Left  
Gauche  
Links  
Izquierda

CLICK!

1 2 CASITA 80

2 3 CASITA 100 CASITA 120

!

**H**

**1R**

**RIGHT**  
Destra  
Right  
Droit  
Recht  
Derecho

CLICK!

2 1 CASITA 80

3 2 CASITA 100 CASITA 120

!

**2L**

CLICK!

CLICK!

3 2 1

!

**2R**

CLICK!

CLICK!

1 2 3

!

**I**

CLICK!